

**MATERIAL**

Black-oxide steel, class 10 (tensile strength 1000 N/mm<sup>2</sup>).

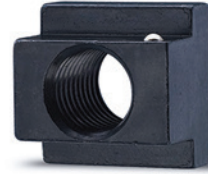
**BALL AND SPRING**

Stainless steel.

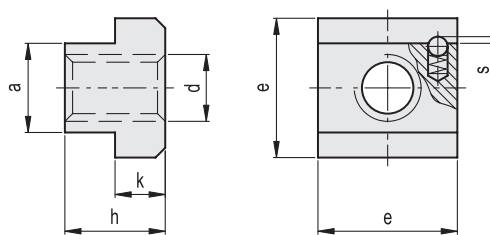
**FEATURES AND APPLICATIONS**

GN 508.2 T-nuts have the same dimension of DIN 508.

The device provided with a ball and spring and located inside the dowel allows it to slide avoiding accidental vertical slipping. These dowels are highly recommended for use with fixing hinges for aluminium sections type CFG. (see page 1514).



| Conversion Table<br>1 mm = 0.039 inch |      |
|---------------------------------------|------|
| a                                     |      |
| mm                                    | inch |
| 10                                    | 0.39 |
| 12                                    | 0.47 |
| 14                                    | 0.55 |
| 18                                    | 0.71 |
| 22                                    | 0.87 |



METRIC

| Code     | Description        | a-0.3-0.5 | d   | e  | h  | k  | s    | Groove width<br>DIN 650 | ⚖   |
|----------|--------------------|-----------|-----|----|----|----|------|-------------------------|-----|
| GN.24801 | GN 508.2-10-M8-10  | 10        | M8  | 15 | 12 | 6  | 0.65 | 10                      | 14  |
| GN.24805 | GN 508.2-12-M10-10 | 12        | M10 | 18 | 14 | 7  | 0.65 | 12                      | 22  |
| GN.24811 | GN 508.2-14-M12-10 | 14        | M12 | 22 | 16 | 8  | 1    | 14                      | 34  |
| GN.24815 | GN 508.2-18-M16-10 | 18        | M16 | 28 | 20 | 10 | 1    | 18                      | 68  |
| GN.24821 | GN 508.2-22-M20-10 | 22        | M20 | 35 | 28 | 14 | 1.6  | 22                      | 155 |

